



Integrated Software for Public Safety

inPURSUIT Public Safety Software Suite

CAGIS Crime Analysis Geographic Information System

inPURSUIT Crime Analysis GIS helps crime analysts, police officers, and administrative officials visualize crime patterns, identify crime patterns within a single jurisdiction and across jurisdictional boundaries, and analyze overall crime trends. The *inPURSUIT* Crime Analysis GIS empowers you to proactively:

Define and Zoom in on Specific Hot Spots

- Select points by geographic area, or by distance from a street or street segment.
- Search and identify crime incidents by area, region, or both.
- Create buffer zones around specific streets.
- Generate a thematic map based on a geographic area (districts, posts, beats, etc.).
- Use any pre-defined ESRI-based shape files to create thematic maps.

Build a Comprehensive Picture of Crime Trends

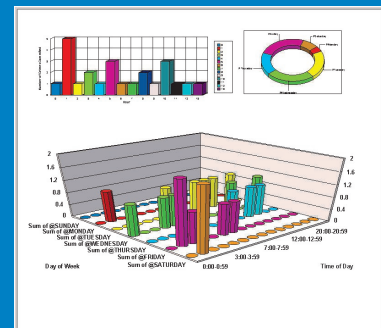
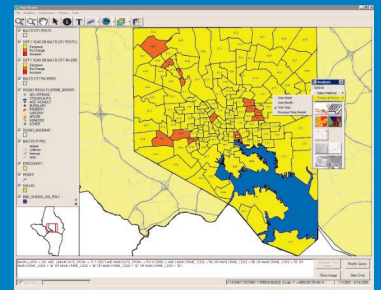
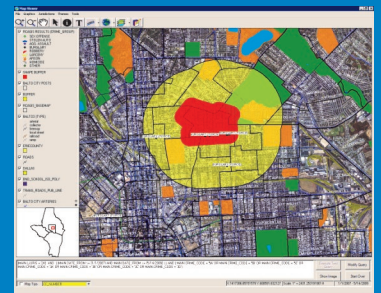
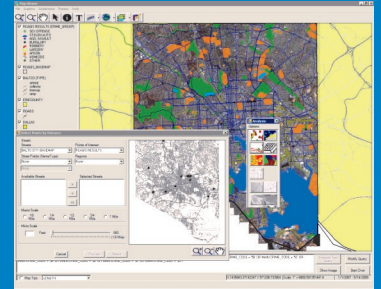
- Develop density maps to identify crime frequency and trends.
- Link recovered vehicles to stolen vehicle incidents.
- Link arrestees to associated incidents.
- Attach and incorporate external shape files and digital ortho-photos/satellite photos.
- Add ESRI layers to get a detailed view of crime data – for example, overlay sex offender registry data and link offenders with sex offenses.
- View any crime information, including data provided by other jurisdictions, associated with a map point.
- Export GIS map point data and buffer zone shape files to use with other applications.
- Export a map point image to a file for distribution.

Perform Numerous Crime Analysis Functions

- Generate comparative map displays using historical data based on ESRI shape files – for example, commanders can view increases or decreases in crime in a defined location.
- Create reports based on selected points.
- Select points:
 - » By geographic area.
 - » By distance from a street or street segment.
 - » By using the cursor.
- Generate crime “hot spots,” standard deviational ellipses, and buffer zones around selected points.
- Wizard-based functionality allows you to build queries based on demographics of victims and arrestees, modus operandi of a crime, property target type, location type, and crime type.
- Defined queries can be saved and shared with other users.

Customize, Analyze, and Report Results

- Develop reports based on agency-defined crime data, including date ranges, jurisdictions, and crime types.
- Report on all incidents, selected incidents, selected region, or area within a specified radius or range.



www.denalisolutions.net

5457 Twin Knolls Rd, Suite 200, Columbia, MD 21045 Tel 443-259-9200 Fax 443-259-9201



Data Sharing

Regional Solutions

In today's world of heightened public safety, the demand for wide-ranging tactical crime data has never been greater. In response to this demand, Denali enthusiastically and aggressively supports information sharing initiatives. We have created and implemented technology solutions that facilitate information sharing across jurisdictional boundaries, allowing law enforcement and public safety agencies to take a proactive approach to community safety.

Multi-Agency Records Management System

Denali's Multi-Agency RMS facilitates interagency data sharing. In addition to increasing law enforcement's effectiveness, the Multi-Agency RMS allows participating agencies to leverage staffing and technology resources. By sharing hardware, software licenses, interface development costs, and maintenance and operating costs, participating agencies can maximize both cost savings and technical capabilities.

Multi-Agency RMS Highlights

- Security – Each agency maintains its own RMS code tables, customizations, administrative settings and user security.
- Control – Agencies can choose which modules and data will be shared at the regional level.
- Ease-of-use – The user interface is exactly the same on the individual agency view of the RMS as on the regional view of the RMS, eliminating the need to learn two systems.
- Regional Data Sharing becomes a reality, providing access to time critical data across jurisdictional boundaries.
- Data Access – Searching and accessing critical data between agencies is made easy. Records of Interest Alerts, BOLOs, Stolen Vehicles/Property and Active Warrants are immediately shared with regional agencies.

Regional Crime Analysis

The *in*PURSUIT Crime Analysis GIS (CAGIS) integrates with the Multi-Agency RMS to provide crime analysts, police officers and administrative officials with the power to visualize and identify crime patterns and analyze overall crime trends across a region. CAGIS provides the ability to easily map incidents and perform analysis for future crimes. Agencies have the ability to identify high-crime areas across jurisdictional boundaries.

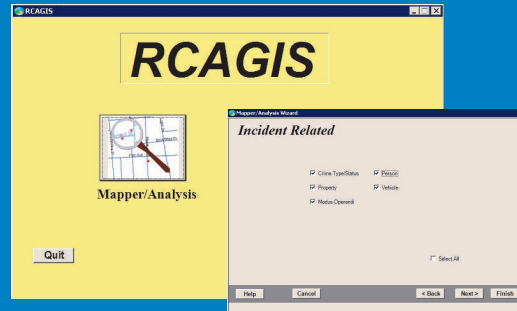
Support of Regional and National Data-Sharing Initiatives and Standards

Denali supports data sharing initiatives and standards at the regional and national levels, including the Global Justice XML Data Model (GJXDM) and National Information Exchange Model (NIEM). Denali has implemented interfaces based on the GJXDM and NIEM. Additionally, we have implemented interfaces to regional and national level information sharing systems.

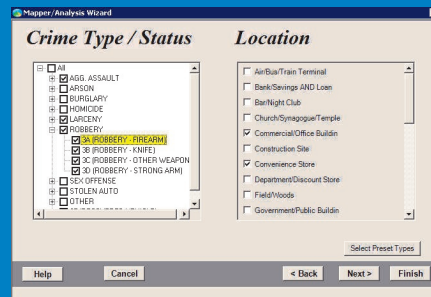
CAGIS Map Wizard

CAGIS Mapping Wizard

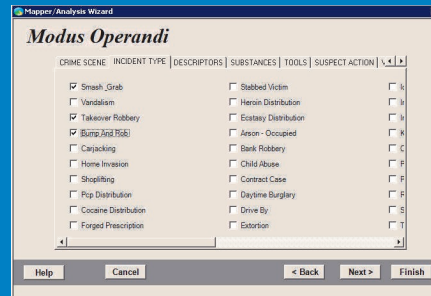
CAGIS Simplifies Crime Analysis via the Mapping Wizard.



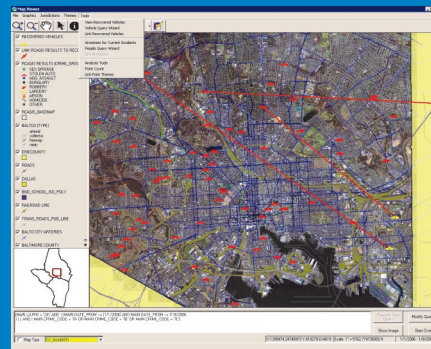
CAGIS Wizard Allows a User to Pick and Choose Crime Data.



CAGIS Wizard Provides the Ability to Select Person, Vehicle, Property and M.O. Data.



Mapped Results Can Be Saved or Exported in Report Formats.



www.denalisolutions.net

5457 Twin Knolls Rd, Suite 200, Columbia, MD 21045 Tel 443-259-9200 Fax 443-259-9201

